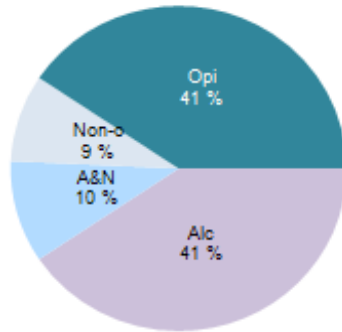


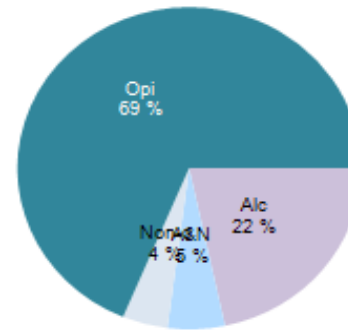
Stockton Quarterly Performance Report to SSP 2015/16 Q1

David Morton 29/08/14

New Presentations - Year To Date

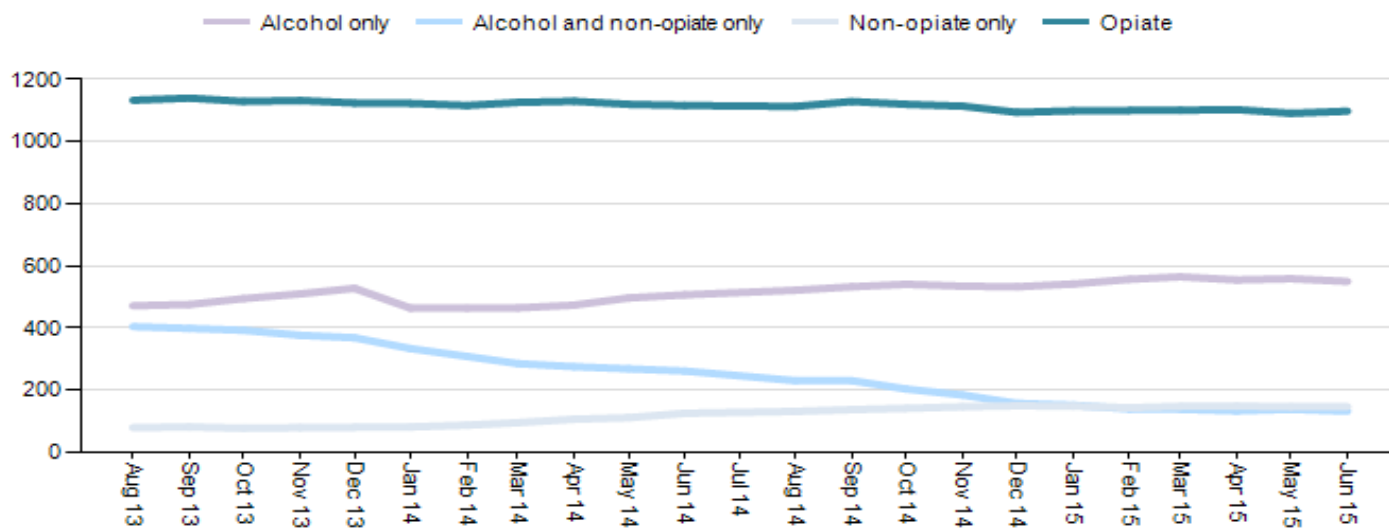


All In Treatment - Year To Date



Substance Category	New Presentations	All in treatment
Alcohol only (Alc)	84	294
Alcohol and non-opiate only (A&N)	21	73
Non-opiate only (Non-o)	18	58
Opiate (Opi)	84	933
Total Clients	207	1358

Number in Treatment (Rolling 12 months)



The proportion of opiate clients has increased from 29% in Q1 2014/15 to 41% in Q1 15/16. This is largely due to a reduction in the fall in the number of Alcohol and non-opiate clients continues to confirm the trend in fewer drug treatment clients that are also drinking at harmful levels. On a rolling 12 month measure, the numbers in treatment have remained very stable with the reduction in combined alcohol and non-opiate use leveling off afdte

	number in treatment	%
2 Top ten substances for those in treatment		
1 Opiates	935	69%
2 Alcohol	571	42%

Commentary

Drug use is no longer reported as primary and secondary use. Numbers are now a collation of all cited drug use. Therefore the numbers quoted can not be added together as they include poly drug use. This method does show a more holistic view of the range of substances used by all those in drug and/or alcohol treatment. As already reported, the proportion of opiate users, benzodiazepine and crack have declined whilst alcohol use has increased.

3 Cannabis	298	22%
4 Benzodiazepines	214	16%
5 Cocaine	146	11%
6 Amphetamine	76	6%
7 Other drugs	54	4%
8 prescription drugs	15	1%
9 Ecstasy	10	1%
10 Crack	2	0%

		Feb-15	Mar-15	Apr-15	May-15	Jun-15
3 Successful completions	Opiate	5.91%	5.73%	5.35%	4.50%	4.80%
	Number of opiate exits	65	63	59	53	53
	As a proportion of all in treatment (rolling 12 month period)	37.76%	40.82%	47.97%	31.70%	34.10%
	Non Opiate	143	147	148	105	105
4 Re-presentation Rates	Opiate	16.20%	8.60%	10.50%	20.94%	22.90%
	Non Opiate	0.00%	4.80%	4.20%	9.96%	6.70%

Commentary

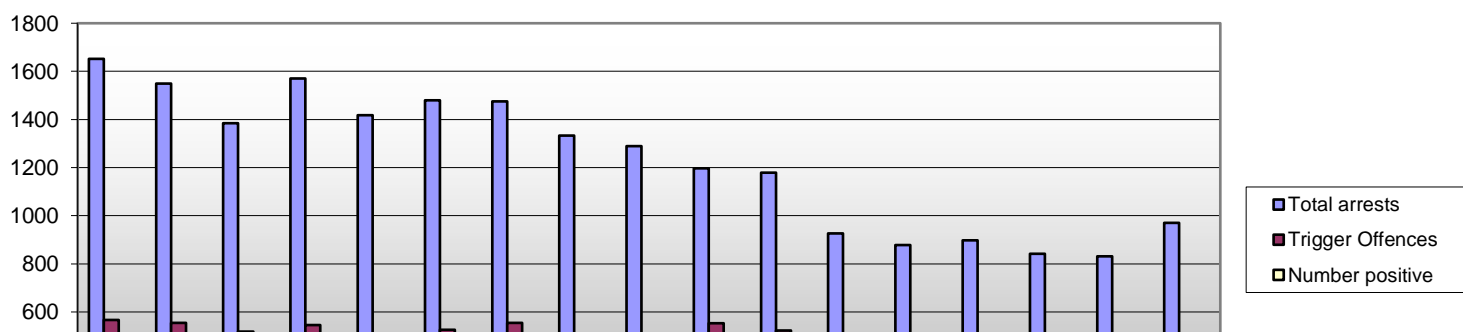
These figures have a six month delay in order to measure re-presentations and therefore don't fully reflect current working practice. Planned treatment exits have leveled off after strong growth in Q4. Non opiate numbers have also tapered off reflecting a dip in referral numbers. Representations have increased sharply compared to the very high performance achieved in the second half of 2014/15. We will be exploring the reasons for this with service providers.

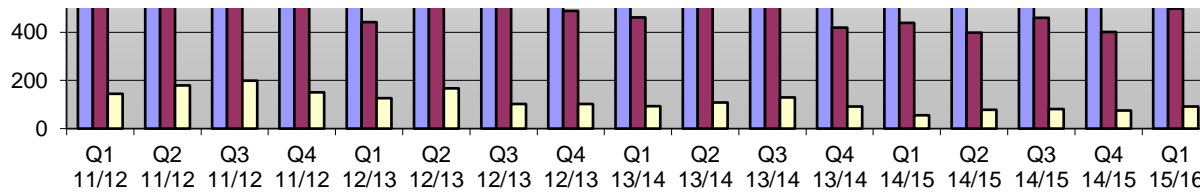
		Q4 13/14	Q1 14/15	Q2 14/15	Q3 14/15	Q4 14/15	Q1 15/16
5 Arrest Referral	Total arrests	926	878	897	842	831	970
	Drugs	413	437	399	460	402	466
	% of total arrests	45%	50%	44%	55%	48%	48%
Additional tests due to inspector discretion		1	0	0	2	0	0
Number of tests completed		141	118	194	185	134	170
Tot Number testing Positive*		91	55	78	81	75	92
% Positive		58%	47%	40%	44%	56%	54%
Total Clients Referred		91	55	78	81	75	92
% of these that are already in treatment		n/a	n/a	n/a	n/a	n/a	n/a

*opiate or cocaine only

Cleveland Police have taken over the arrest referral process in April 2014. Overall arrest rates for Stockton have only been supplied since August 2014 and show a significant drop from Q2 2013/14 onwards. The proportion of trigger offences remains consistent with the first signs of an upward trend in the last nine months. Drug test numbers were lower than before the change of contract in Q1 but have recovered in Q2. Full staffing levels were achieved in August 2014 allowing the new procedure to be fully operational. A lack of targeted testing in August reduced the proportion that tested positive in Q2 2014/15, but the last two quarters have shown that targeting is effective.

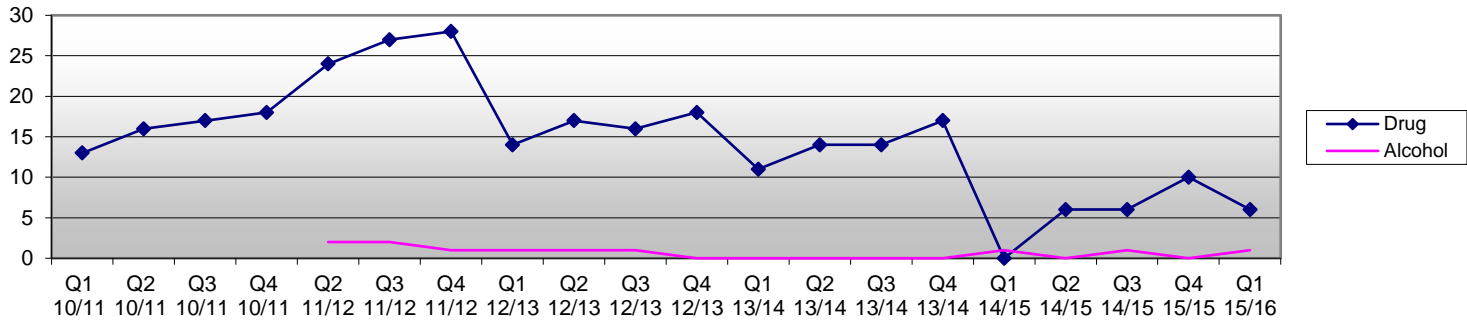
Drug related arrest data





		Q3 13/14	Q4 13/14	Q1 14/15	Q2 14/15	Q3 14/15	Q4 14/15
6 18yr olds in Treatment	Drug treatment	14	17	0	6	6	6
	Alcohol Treatment	0	0	1	0	1	1
	Successful alcohol discharges	0	0	0	0	0	0

numbers of 18 yr. olds in treatment



18 yr. Olds - This data shows a cumulative year to date figure for 18yr olds in treatment. We would therefore expect a drop at the beginning of each new year for Q1 but this was not seen at the start of 2011/12 giving rise to concern. Last year the numbers returned to normal levels suggesting an error in the reported data. Numbers have remained low and stable and in there is one client in alcohol treatment. All six drug clients are non-opiate clients. Two clients are with the young peoples service and have been retained in that service due to their particular vulnerabilities.

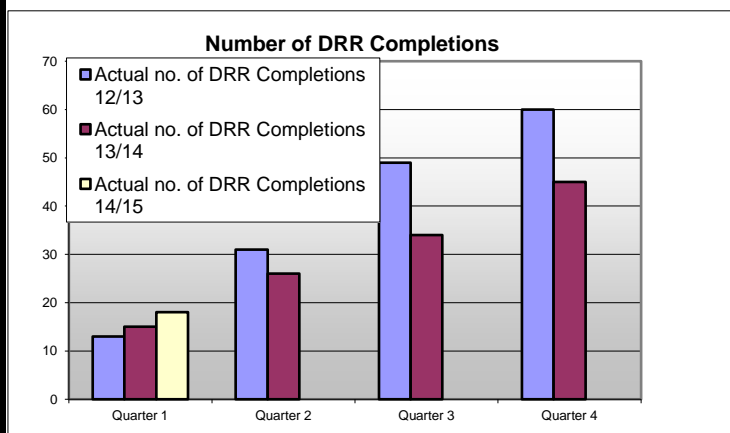
7 Housing Needs

number of new entrants that have a housing problem
 new entrants that are NFA
 percentage of new entrants that have a housing need
 percentage of new entrants that are NFA

	Q1 14/15	Q2 14/15	Q3 14/15	Q4 14/15	Q1 15/16
number of new entrants that have a housing problem	34	67	74	112	25
new entrants that are NFA	7	14	19	23	12
percentage of new entrants that have a housing need	14.7%	14.2%	19.6%	12.9%	12.1%
percentage of new entrants that are NFA	3.0%	2.5%	4.5%	2.6%	5.8%

This is reported as a cumulative figure YTD and therefore Q1 2015/16 should be compared with Q1 of the previous year. the ratio of those having a housing problem are affected the ever changing proportion of opiate and non-opiate clients entering or re-entering treatment. Overall numbers with housing problems are down but the proportion that are NFA has risen sharply.

9 Drug Rehabilitation requirements (DRR)



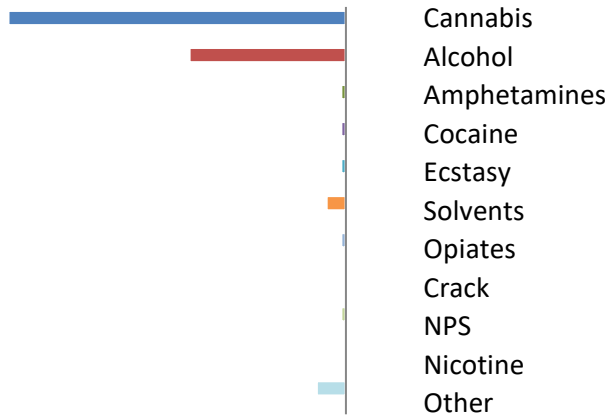
There are no numerical target for DRR completions for 2013/14 and 2014/15. The previous two years are provided for comparison.

Work is on-going with the newly created CRC and treatment providers to improve the targeting and management of the referral process. It is hoped that there will be an increase in orders but increased challenge and requirement to engage in structured treatment could increase breach activity with an impact on completion rates.

We are hopeful that reporting of this data will be re-established for Q2.

10 Young People

	Q4 13/14	Q1 14/15	Q2 14/15	Q3 14/15	Q4 14/15	Q1 15/16
Young people in services, rolling 12 months	104	102	87	73	101	77
Young people in services, year to date	104	38	53	71	101	107
New presentations of young people, year to date	54	19	34	52	82	17
number of planned discharges (YTD)	59	7	14	21	32	20
percentage of discharges that are planned	69%	78%	93%	91%	86%	77%



Substances

The rolling number of young people in treatment has peaked in Q1 2015/16. Improved turnover has reduced the numbers currently in treatment to 77 a slight reduction from Q1 14/15. The problematic substances remain fairly consistent with the majority reporting cannabis and/or alcohol use.